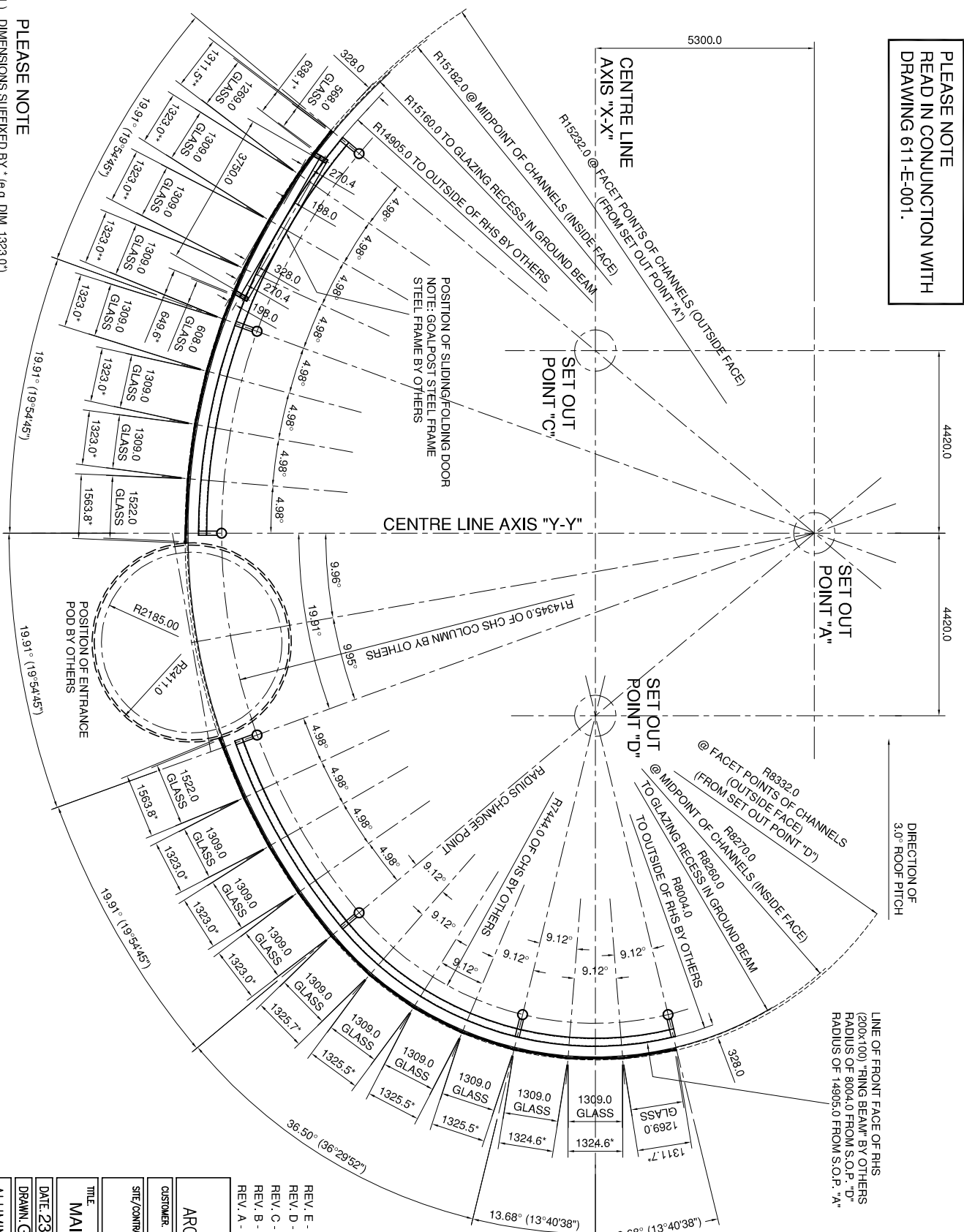


PLEASE NOTE
READ IN CONJUNCTION WITH
DRAWING 611-E-001.



DIRECTION OF
3.0° ROOF PITCH

LINE OF FRONT FACE OF RHS
(200x100) RING BEAM BY OTHERS
RADIUS OF 8004.0 FROM S.O.P. "D"
RADIUS OF 14905.0 FROM S.O.P. "A"

SPECIFICATION NOTES

- 15mm thick CLEAR SECURITY POINT GLASS (SECURIPONTS TOUGHENED & HEAT SOAK TESTED).
- ALUMINIUM PERIMETER CHANNELS ETC. TO BE P.P.C. RAL 9006
- SPIDER GLASS SEMI 0 (HALF BRACKETS) WITH SSM1519R BOLT FITTINGS BOTH TO BE STAINLESS STEEL GRADE 316
- ARCHITECT PLEASE CHECK ALL DIMENSIONS
- DIMENSIONS RELATING TO STEELWORK ARE TO BE CHECKED BY OTHERS

⊙ DENOTES CHS COLUMN BY OTHERS

PLEASE NOTE

- 1) DIMENSIONS SUFFIXED BY * (e.g. DIM. 1323.0*) ARE DIMENSIONS TAKEN FROM THE OUTER FACE OF THE ALUMINIUM CHANNELS
- 2) DIMENSIONS SUFFIXED BY ** (e.g. DIM. 1323.0**) ARE DIMENSIONS OF HEAD CHANNELS ONLY INSOLATED AREA @ GOALPOST FRAME

VIEW ON ELEVATION "A"

VIEW ON ELEVATION "B"

REV. E - AS ARCHITECT'S COMMENTS - 30.4.99
REV. D - GOALPOST AREA CLARIFIED - 22.4.99
REV. C - RADIAL DIMENSIONS CLARIFIED - 19.4.99
REV. B - TO REVISED SETTING OUT - 14.4.99
REV. A - AS ARCHITECT'S COMMENTS - 17.3.99

ARCHITECTURAL SYSTEMS		
CUSTOMER	LEXUS DESIGN SERVICES	
SITE/CONTRACT	LEXUS, BRISTOL	
TITLE		
MAIN GLAZING - SETTING OUT PLAN		
DATE	23.2.99	SCALE
DRAWN	GKDC	CHECKED
DRG No.	611-P-001 E	
ALUMINIUM FINISHED.		
ALL ELEVATIONS VIEWED FROM OUTSIDE UNLESS OTHERWISE STATED		